

Upper Wolf Creek Technical Advisory Committee

Monday, April 25, 2006
The Winery at Wolf Creek

Eric Akin
Upper Tuscarawas River
Watershed Coordinator

Agenda

- **Welcome**

- Introductions
- Review

- **Western Reserve Land Conservancy**

- Chris Bunch, Medina Summit Chapter

- **Action Plan Update**

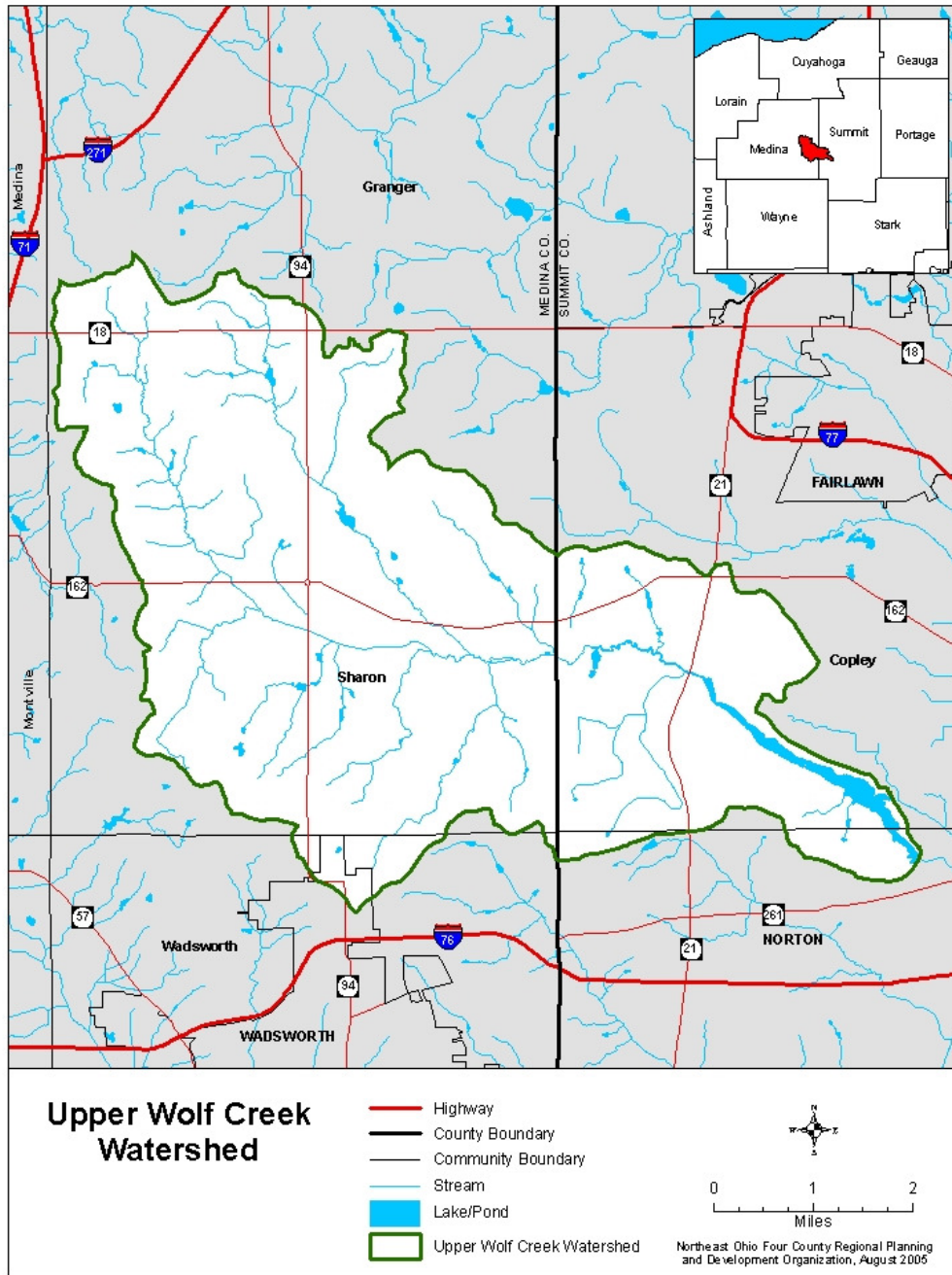
- Watershed Boundaries, Format, Information Update and Gaps

- **Water Quality Discussion**

- TMDL Data
- Barberton's Data
- Macroinvertebrate Sampling

- **Next Step**

- Goals and Objective
- Priority Projects
- Next Meeting



Upper Wolf Creek Watershed

- 18,062 Acres
- Medina and Summit Counties
- Barberton Reservoir
- Source (Drinking) Water for the City of Barberton
- Mid-Continental Divide



Why Update?

Since the Action Plan was Completed:

- **Summit County's Setback Ordinance**
- **Storm Water NPDES Permit Phase 2**
- **Summit Metro Parks Wetlands Inventory**
- **Ohio River Basin Clean Water Plan (NEFCO)**
- **Medina County's Natural Resource Inv.**
- **Ohio EPA Water Quality Survey (TMDL)**
- **Other Local Initiatives**
- **New State Guidelines for Action Plans!**

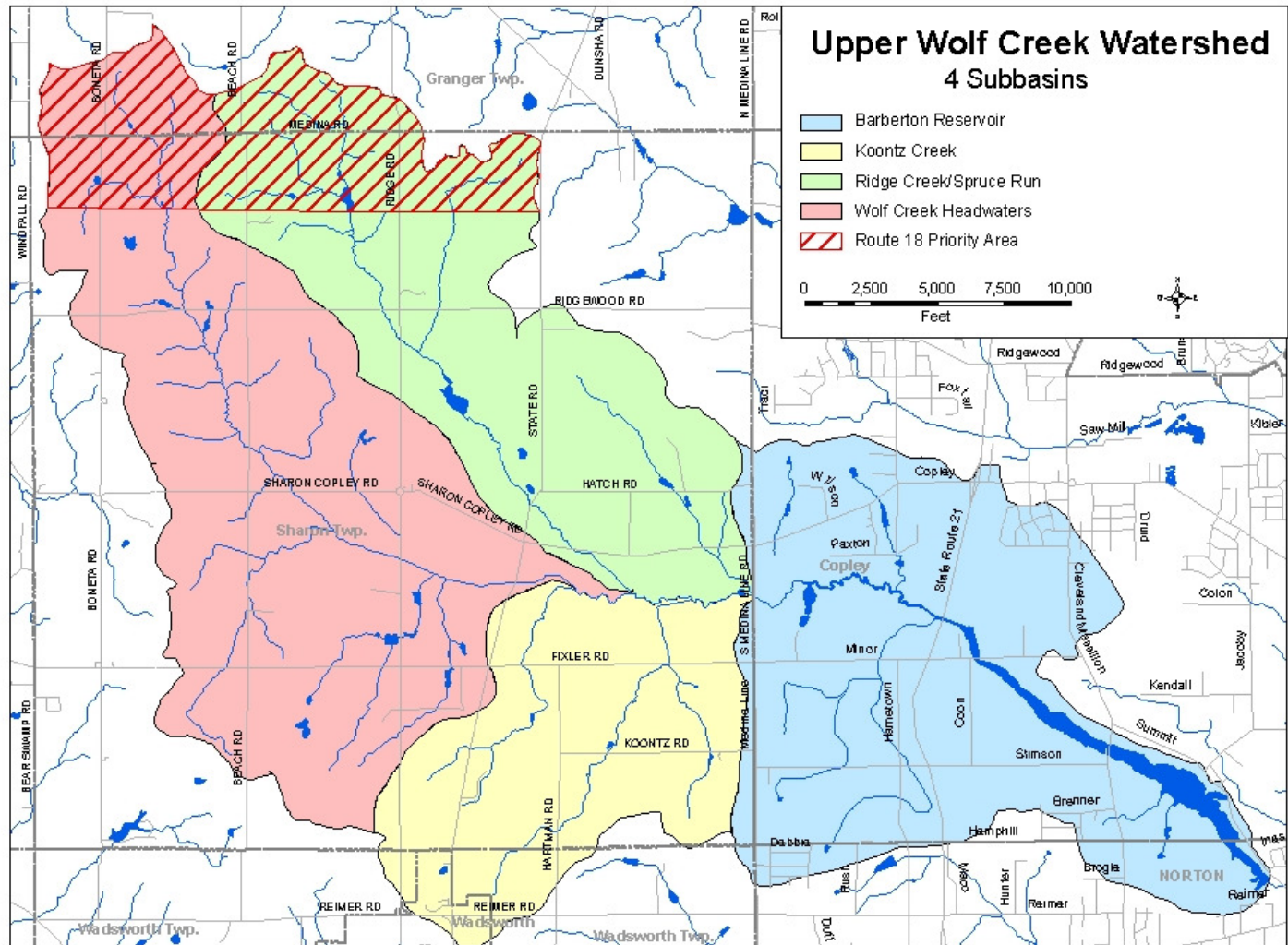
State Action Plan Guidelines

- Developed in 2002 and 2003
- Appendix 8 and Endorsement Guidelines
- Help Ensure Plans Being Produced by Watershed Groups Addressed Known Problems
- Work in Smaller Areas (Subwatersheds)
- Link Actions to Water Quality Information
- Pollution Reduction Computer Modeling

Why Get Endorsed?

- It's Been Proven to Work!
- Linked to Outside Funding:
 - Ohio EPA Section 319 Grants
 - WRRSP
 - Linked Deposit
 - EQUIP
- Upper Wolf Creek Comprehensive Watershed Management Plan **DOES NOT** Meet the New Guidelines

Subwatershed Boundaries



Information Update

- See Handout
- Arranged by Proposed Format (Handout)
- Much of the Inventory Information Collected
- Prioritized Goals, Objectives, and Actions for the Watershed and Subwatersheds need to be Developed

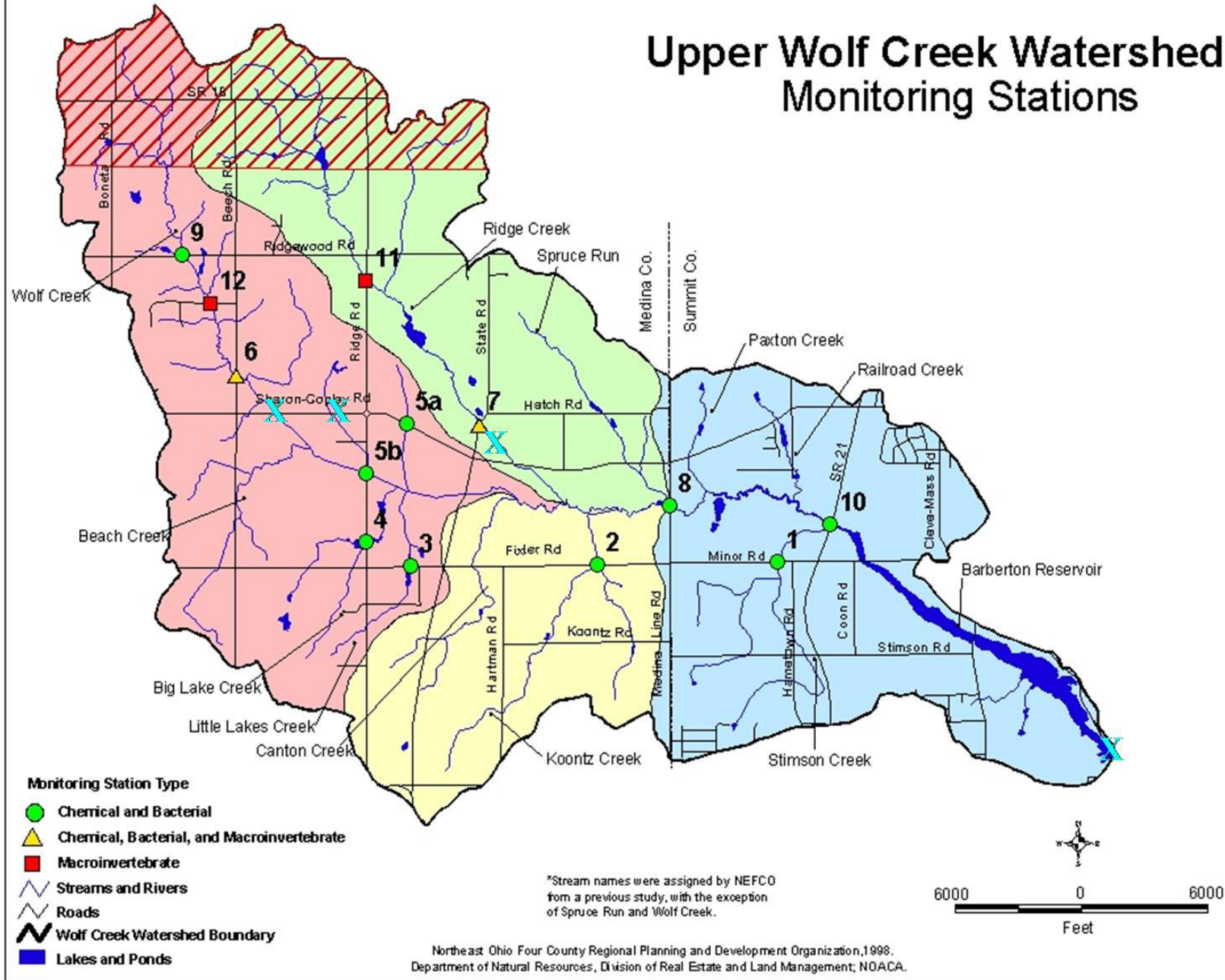
Data Gaps

- Miles of Modified Channel
- Eroded Banks Information
- Riparian Buffer Vegetation Inventory
- Past and Ongoing Water Quality Projects
- HSTS Information
- Biological Features
- Sources and Causes of Impairments
- Load Reduction Modeling

Macroinvertebrate Sampling November 1, 2005

- Wolf Creek at the Beach Road Bridge
- Ridge Creek at State Road Bridge
- Wolf Creek Average Score 20 = "Good"
- Ridge Creek Average Score 17 = "Good"
- Wolf Creek Site had Greater Diversity
- Ridge Creek Site Heavily Silted
- Development Upstream of Ridge Creek Sites

Upper Wolf Creek Watershed Monitoring Stations



Macroinvertebrate Sampling

Wolf Creek at Beach Rd.

- 1998 Score = 16 ("Fair")
- 2005 Scores = 16 ("Fair"), 21 ("Good"), and 23 ("Excellent")

Ridge Creek at State Rd.

- 1998 Score = 23 ("Excellent")
- 2005 Scores = 15 ("Fair"), 17, and 19 ("Good")

Ohio EPA TMDL Aquatic Life Use Results

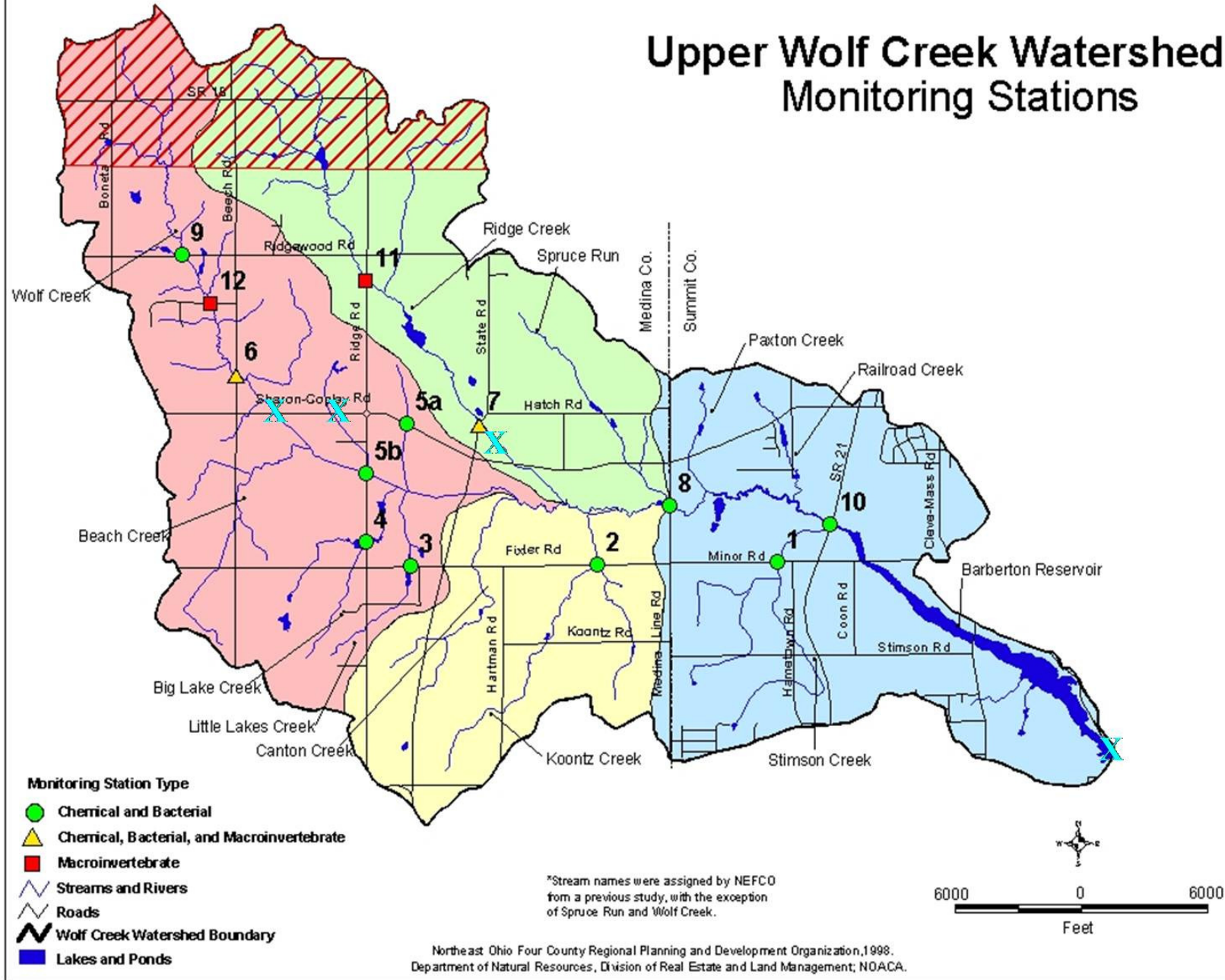
Attaining Aquatic Life Uses for WWH

- Upper Wolf Creek from Ridgewood Rd. to Ridge Creek
- Koontz Creek

Not Attaining Aquatic Life Uses for WWH

- Ridge Creek
- Upper Wolf Creek from Ridge Creek Confluence to Barberton Reservoir Dam
- Pollutant Load Modeling will be Completed by Ohio EPA on these Sections

Upper Wolf Creek Watershed Monitoring Stations



Ohio EPA TMDL

Preliminary Chemical Monitoring Results

- Nutrient Levels (Nitrate+Nitrite, Total Phosphorus, etc.) Low
- Total Suspended Solids Elevated at the Tributary and Ridge Creek
- Habitat Ratings Show **"Few Good"** Areas
- Comparison with Barberton's Water Quality Monitoring
- TSS Levels Higher for Barberton
- Ammonia Levels Higher of Ohio EPA

Next Steps

- Causes and Sources of Pollution
- Pollutant Loads
- Goals and Objectives
- Outreach
- Next Meeting

www.uptuscwatershed.org/wolf_tac.htm