

Upper Tuscarawas River Technical Advisory Committee

New Franklin Administration Building

Thursday, April 20th, 2006

2:30 p.m.



Agenda



➤ Welcome

- Questionnaire

➤ Summit County General Plan

- Susan DeChant and Nick Lautzenheiser

➤ Western Reserve Land Conservancy

- Chris Bunch

➤ Action Plan Update

- Eric Akin

➤ Next Step

- Discussion



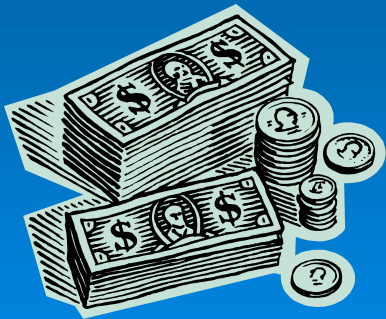
Why Update?

Since the Action Plan was Completed:

- Summit County's Setback Ordinance
- Storm Water NPDES Permit Phase 2
- MetroParks Wetlands Inventory
- Ohio River Basin Clean Water Plan (NEFCO)
- Summit HD's Septic System Program
- Ohio EPA Water Quality Survey (TMDL)
- Other Local Initiatives
- New State Guidelines for Action Plans!

Action Plan Review

- 7 Goals
 - 21 Objectives
 - 79 Identified Actions
 - 0 Projects Identified
 - No Measurable Goal/Load Reduction



**= Few Water Quality
Improvement Projects and
Little Outside Funding**

State Action Plan Guidelines

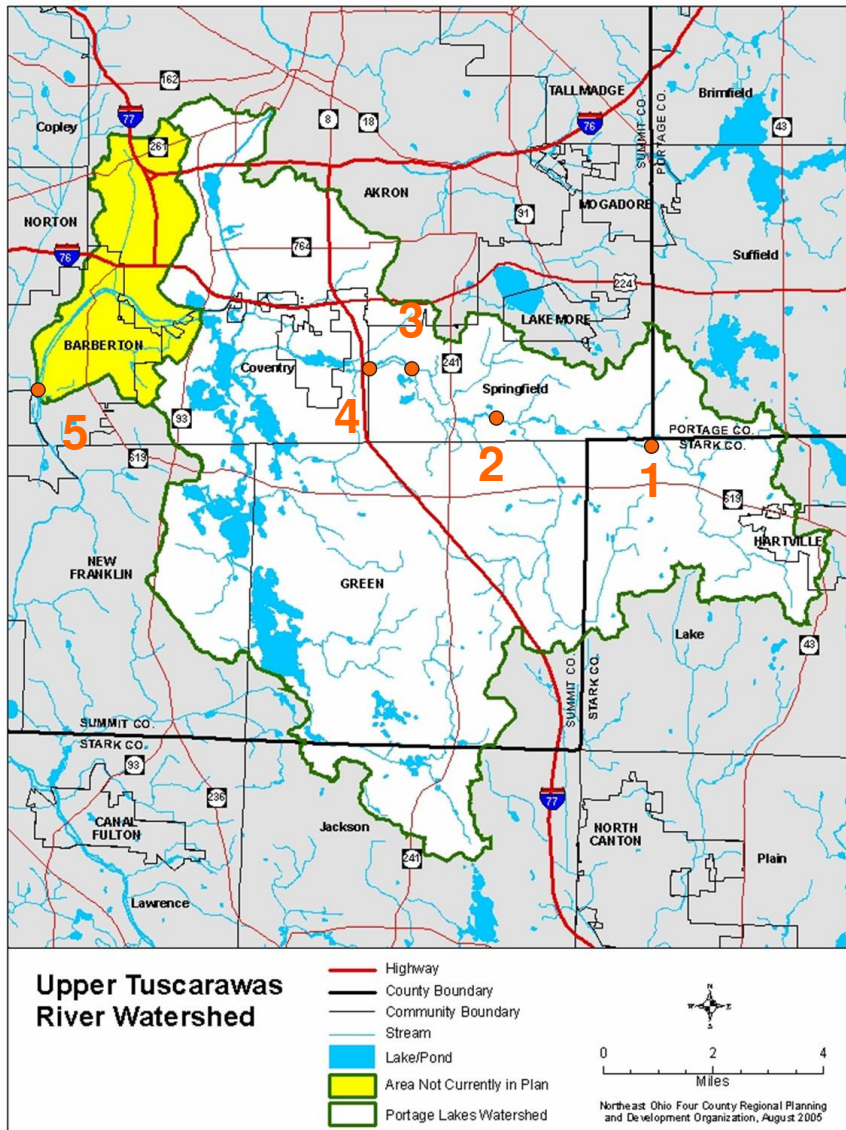
- Developed in 2002 and 2003
- Appendix 8 and Endorsement Guidelines
- Help Ensure Plans Being Produced by Watershed Groups Addressed Known Problems
- Work in Smaller Areas (Subwatersheds)
- Link Actions to Water Quality Information
- Pollution Reduction Computer Modeling

Why Get Endorsed?

- It's Been Proven to Work!
- Linked to Outside Funding:
 - Ohio EPA Section 319 Grants
 - WRRSP
 - Linked Deposit
 - EQUIP
- Upper Tuscarawas River Action Plan **DOES NOT** Meet the New Guidelines

Ohio EPA TMDL Sample Sites

1. Mogadore Ave.
 - 4 Samples
2. Pressler Road
 - 5 Samples
3. Upstream of the Springfield #91 WWTP
 - 4 Samples
4. Arlington Road
 - 11 Samples
5. Snyder Ave.
 - 30 Samples



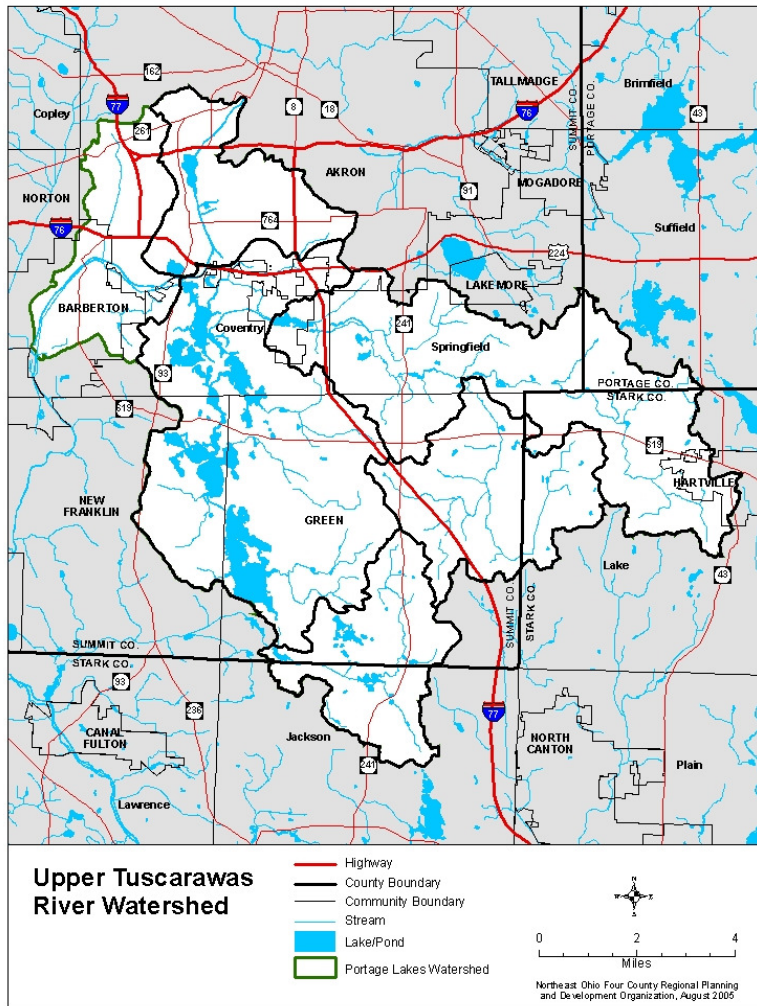
Ohio EPA TMDL Preliminary Results

- Tuscarawas River from Pressler Rd. to State St. **Attains** Aquatic Life Use
- Upper Tuscarawas River Headwaters in **“Poor”** Health for Aquatic Life Use
- Myersville Creek (Metzger’s Ditch) and Tusc. River from State St. to Wolf Creek in **“Fair”** Health for Aquatic Life Use
- Pollutant Load Modeling on Section Not Reaching Attainment = **Headwaters, Myersville Creek, State St. to Wolf Cr.**

Ohio EPA TMDL Preliminary Results


- High Nutrient Levels (Nitrate+Nitrite & Total Phosphorus) Downstream of WWTP
- Total Suspended Solids Increase from Upstream to Downstream Sites
- Habitat Ratings Show “**Few Good**” Areas
- Only Section of the Tusc. River to Show **DECREASED** Fish Community Scores
- Pollutant Modeling Will Occur for Section Not in Attainment = Headwaters and

Subwatersheds: How Many?




- Old Plan = 5
- Added Section from Portage Lakes Dam to Wolf Creek
- Only Includes the Portion of the Nimisila Watershed Upstream of Portage Lakes
- More, Less, or the Same?
- Names?

Proposed Format

- I. Introduction
 - II. Watershed Inventory
 - III. Water Resource Quality
 - IV. Water Quality Issues
 - V. Load Reduction
 - VI. HSTS Plan
 - VII. Subwatershed Action Plans
 - VIII. Water Quality Monitoring
 - IX. Evaluation and Funding
 - X. Appendices
- 

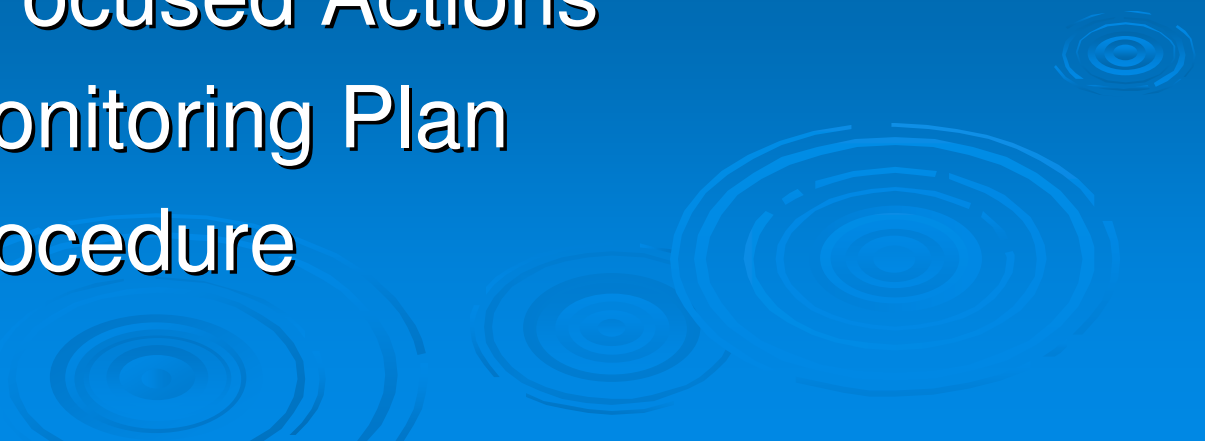
Information Update

- See Handout
 - Arranged by Proposed Format
 - Much of the Inventory Information Collected
 - Prioritized Goals, Objectives, and Actions for the Watershed and Subwatersheds need to be Developed
- 

Data Gaps

- Miles of Modified Channel
- Eroded Banks Information
- Riparian Buffer Vegetation Inventory
- Past and Ongoing Water Quality Projects
- HSTS Information
- Biological Features
- Sources and Causes of Impairments
- Load Reduction Modeling

To Be Developed

- Problem Statements
 - Restoration & Protection Goals and Objectives
 - Pollutant Loading (Ohio EPA)
 - Restoration & Protection Projects
 - Specific and Focused Actions
 - Watershed Monitoring Plan
 - Evaluation Procedure
- 

Next Steps

- Causes and Sources of Pollution
- Pollutant Loads
- Goals and Objectives
- Outreach
- Next Meeting

www.uptuscwatershed.org/tuscarawas_tac.htm