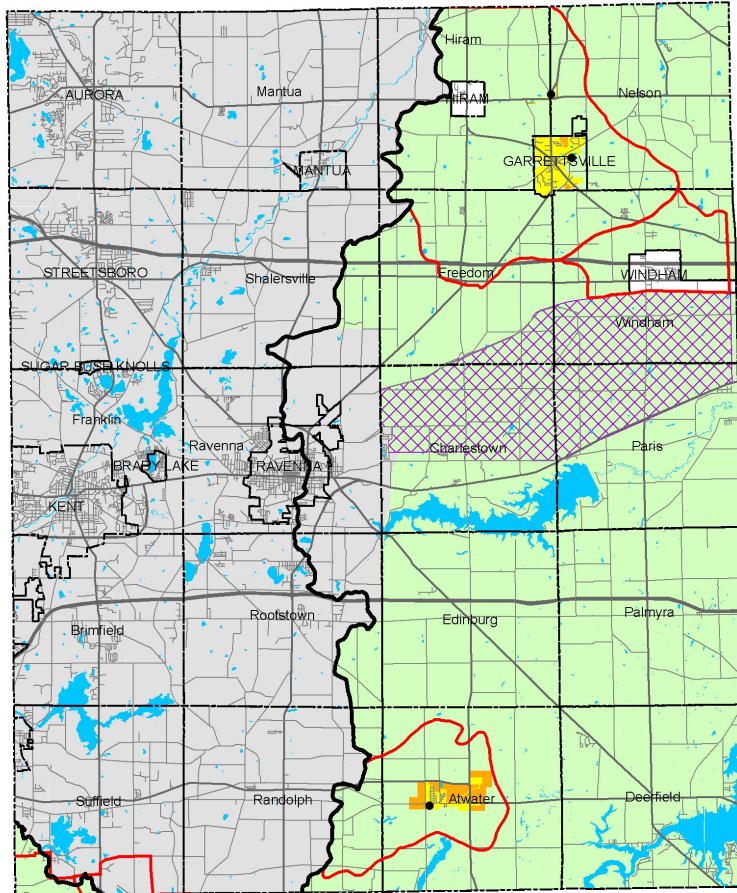









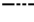
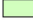






Appendix 3-2

Portage County Facilities Planning Areas (FPA)

Figure 3-2a

Portage County Facilities Planning Areas 208 Clean Water Plan Update



- | | | | |
|---|---|---|----------------------------|
|  | Areas Currently Served with Sanitary Sewers |  | Basin Divide |
|  | Areas Expected to be Served with Sanitary Sewers within the Next 20 Years |  | FPA Boundary |
|  | Areas that will be Served by Home Sewage and Semi-Public Sewage Disposal Systems |  | Stream |
|  | Areas that will be Served by a POTW or by Home Sewage and Semi-Public Sewage Disposal Systems |  | Community Boundary |
|  | Areas without a Wastewater Treatment Planning Prescription |  | Highway |
|  | Lake Erie Basin |  | Road |
|  | Lakes and Ponds |  | Wastewater Treatment Plant |
|  | Ravenna Arsenal | | |

* Please see Clean Water Plan text for a complete explanation of the mapping categories.

Northeast Ohio Four County Regional Planning and Development Organization, May 2005.

3-2-2

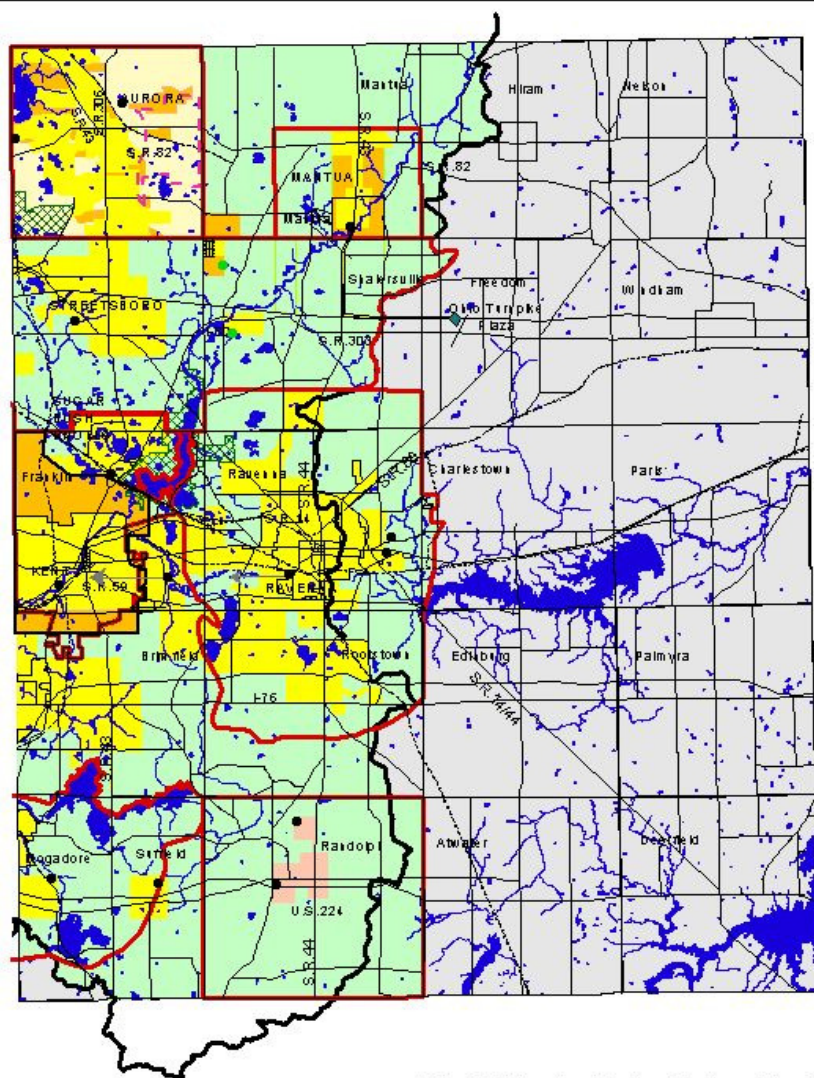


Figure 3-2b
Portage County Facilities Planning Areas
 Clean Water Plan Update for the Lake Erie Basin

- Portage County Facilities Planning Areas
- Areas Currently Sewered
 - Areas Programmed for Sewers Within the next 20 Years
 - Areas That Will be Served by On-Site Nondischarging Systems
 - Areas That Will be Served by a POTW or by On-Site Nondischarging Systems
 - Randolph Growth Area Programmed to be Sewered
 - Potential Additional Sanitary Sewer System Service Area
 - Ohio River Basin
 - Lakes and Ponds
 - Parks
 - F.P.A. Boundaries
 - Political Boundary**
 - County Roads, State Routes and Interstate Hwys
 - Lake Erie/Ohio River Basin Divide
 - Railroads
 - Rivers
 - Publicly-Owned Wastewater Treatment Plant
 - Plants to be Abandoned
 - Excess Flow to Fish Creek

* Please see text for a complete explanation of the mapping categories

* Please see the FPA Reference Map (Figure 3-1a) for names of adjacent FPAs.



Source: Northeast Ohio Four County Regional Planning and Development Organization, April 9, 2003. Source Material: Ohio Department of Natural Resources; Division of Real Estate and Land Management; Portage County Regional Planning Commission.